



Parish Magazine

February 2024



A frosty morning on the road from Wilton.

Photo by Cally Edwards

STaB is published by the Parochial Church Council and delivered free of charge to every home in Stratford Tony and Bishopstone. We hope you find it interesting and informative. **Donations towards publication costs are always welcome.**

Donations should be made payable to Bishopstone Parochial Church Council and sent to: The Treasurer, Bishopstone PCC, Ebble Cottage, Mill Lane, Bishopstone, SP5 4BG. Please state on a cover note that it is for STaB.

The views in this magazine are not necessarily those of the PCC.

Editor: Kate Pendleton: 780655

Editorial Team: Robert Pendleton 780655

Cally Edwards: 780079

Email: **teamstab2019@gmail.com**

Advertising

Robert Pendleton: 780655

E.mail: **stabads@outlook.com**

Any articles for inclusion are to be submitted by 5pm on the 20th of the month to appear in the next issue - *unless the magazine is already full.*

The editors reserve the right to edit all contributions.

ANNUAL PARISH MEETING

The Annual Parish Meeting will take place in the Village Hall at **7.00pm on Thursday 14th March 2024**. The APM is separate from meetings of the Parish Council and is an opportunity to have a general discussion of any issues of concern to villagers. In recent years the meeting has also heard reports from village organisations about activities in the last year and any plans for the future. This year it is intended to also include a discussion about the possible activities of the new Tree Wardens established under an initiative by Wiltshire Council to promote proper tree maintenance and encourage woodland planting.



A warm welcome to Bishopstone and Stratford Tony...

Welcome to Keith and Judy Johnson who have recently moved into Crouchston. We hope that you are enjoying life in Bishopstone.

Please let us know if you know of anyone who moves into Bishopstone or Stratford Tony - or indeed if you yourself have recently moved in, please do introduce yourselves! - so that we can offer them/you a welcome in STaB.



Hello from the Revd Canon Jenny Taylor



February has arrived and let's hope we can soon spot the signs of Spring all around us! It has been a grim start to 2024 with all the floods and thank you for everyone who has helped those hardest hit in any way.

There has been some movement in the Chalke Valley Clergy Team as the Revd Kate Woolven has been licensed as an Associate Priest. She is going to have particular responsibility for Bowerchalke as well as sharing in the leading of worship up and down the Valley as both Ruth and I do. We await April with growing excitement, as soon the date for the licensing of Alison Waterhouse will be announced – she will obviously be living in Broad Chalke Rectory and be looking after Broad Chalke and the Parishes west of Bowerchalke.

As you read this our Deanery visit to Cueibet in South Sudan is happening and we wish God Speed to the Revd Ali Alexander (Curate at St Thomas's Salisbury) and to Geoff Taylor as they meet up again with Bishop Elijah and his people.

February 14th is of course St Valentine's Day but it is also Ash Wednesday! Please do join us for our traditional Services of Ashing either at Broad Chalke or Coombe Bissett – Lent is of course a traditional time for "upping our game" in the prayer stakes – the world greatly needs our prayers and there is always comfort in knowing others pray with you so perhaps our parish can be a real focus of prayer this Lent?

Almighty God, from whom all thoughts of truth and peace proceed:
kindle, we pray, in the hearts of all, the true love of peace
and guide with your pure and peaceable wisdom
those who take counsel for the nations of the earth. Amen

Chalke Valley Team Ministry - Parish of Bishopstone and Stratford Tony
Team Rector: Ruth Howlett Shipley 01722 697022
Team Vicar responsible for Bishopstone and Stratford Tony: The Revd Canon Jenny Taylor 01722 503081
Church Wardens: George Brutton 07989 382465 Sarah Seal 01722 780305
Lay Pastoral Assistant: Sally Leaver 01722 780447
Team Administrator: Emily Broomhead 07890 262376 thechalkevalleychurches@gmail.com

Parish Council

The latest meeting of the Parish Council took place on Thursday 11th January 2024. Councillors Thorne, Edwards, Barter, Smith, Tatner and Rigg were present, together with the Parish Clerk Mike Ash. Apologies had been received from Cllr Williams. One member of the public was also present. The full minutes of the meeting are available on the village website (www.bishopstone-salisbury.co.uk).

It was noted that the weather in the first week in January had resulted in high levels of both river and groundwater. As a result one property in the village had experienced internal flooding. On the other hand, it was clear that works undertaken, most recently in Faulston Lane, had meant that the impacts overall were much less than had been the case in the past. The Chairman, Cllr Ali Thorne, thanked everyone who had helped out in dealing with flooding in the property affected and for the work of Cllr Edwards and the Flood Wardens.

The Clerk reported on discussions that had taken place with Officers of Wiltshire Council about the problems caused by road closures along the High Road, with consequent “rat-running” along Mill and Faulston Lanes. In all, closure orders had been put in place for 8 days over a period of 3 months in late 2023, largely for works by Openreach. Officers explained that statutory requirements regarding the minimum width of road left once work and safety zones had been put in place meant that it was not possible to keep the road open using lights or stop/go boards. Equally, it is not possible to stop drivers using unapproved alternative routes if these exist, only discourage them by indicating that these are not suitable as a diversion. Any damage caused by the use of unsuitable routes is the responsibility of the drivers concerned. However, they did undertake to raise with the utility companies the need to minimise closures and not to postpone closures once announced. During these discussions it was made very clear that the Parish Council considers that the current arrangements are wholly unacceptable.

The meeting formally approved a Precept for the financial year 2024/25 of £7,500, up from £5,000 in 2023/24. The Precept is the amount of money the Parish Council’s receives from Wiltshire Council to fund its spending. It is collected as part of Council Tax and the increase next year will add approximately £9.00 a year to the tax on a Band D property in Bishopstone.

The next meeting of the Parish Council will take place in the Village Hall on **Thursday 14th March 2024, following the Annual Parish Meeting** (further details on p2 of this edition).

Bishopstone Village Christmas Card 2023

Many thanks to all those who gave a donation and signed the Bishopstone Village Christmas Card in the Village Hall wishing their friends and neighbours a very Happy Christmas.

As a result of your contributions a donation of £300 will be made to SERV Wessex – The Blood Runners, a charity that supplies motorcycle and car couriers to transport blood supplies, medication and other urgent consignments for the NHS during the night.

Those who signed the card (mostly humans but with the odd pet!) were:

The Stockers

Mary and Ross Colwill

Alfie and Anna

Sue and David Dunwell

Alix and Michael

Ron and Pat A

Dot and Mike Walker

Bruce and Gail Alcorn

Sue and Francis Taylor

Alan and Anne Stutchbury

Sarah Seal and Family

Marilyn and Ian Smith

Kate, Robert, Ralph and Ted

Sue and Edward Schruers

Heather and Des

Margaret and Joe

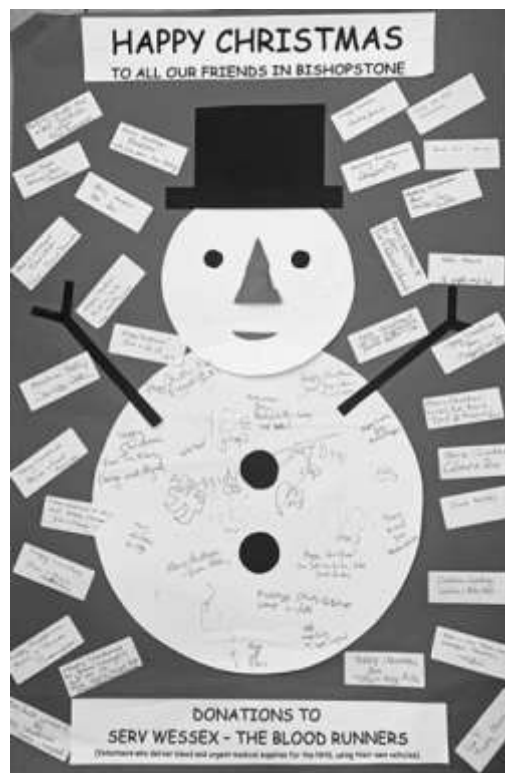
Nicky, Ed, Annie, John and

Florence Rigg

Richard Brett

Tim, Hilary, George and Alfred

Joy and Deric



The Dimmers

Anne and James Thompson

All at the Three Horseshoes

Norman and Margaret

Audrey Jennings

John and Judy Atkinson

Roger and Pip

Edward and Sue

Olive Moody

Caroline and Mike Ash

Sally L

Toby and Kay Mills

Sue P

Elvis and Maggie

Catherine, Martin, Isobel,
Louisa and Mac

Andy, Hetty, Snowy and
Apollo

Amelie and Louisa

Lily

Toby

Gideon and Felix

Village Hall



February 2024

QUIZ EVENING

On **Saturday 2nd March** there will be another classic Quiz evening! The cost is £12.50 per head or £50.00 for a table of four. This includes supper and a bar will be available. Guests booking individually will be joined with others to make up a team.

Early booking is strongly advised as these events are popular and numbers are limited. To make a booking, please contact Caroline Ash on (01722) 781044 and advise of any dietary requirements for yourself or any guests.

The BISHOPSTONE COMMUNITY CAFE

Coffee Mornings are normally held on alternate **Thursdays**. Dates for the coming period are the **8th** and **22nd** of **February** and the **7th** and **21st** of **March**.

10.30am until 12.00 noon.

Everyone is welcome to look in for a coffee and chat. There is presently no charge for refreshments.

MOVIOLA at Bishopstone

Friday 23rd February. The Moviola film for February is '**Scrapper**'. *"Living alone in her London flat, 12-year-old Georgie must confront reality when her estranged father, Jason, shows up out of nowhere. Uninterested in a sudden new parental figure, she remains stubbornly resistant to his efforts. As they both adjust to their new circumstances, Georgie and Jason soon find that they still have a lot of growing up to do". Produced jointly by the BBC and BFI, this highly acclaimed independent film stars Lola Campbell, Harris Dickinson and Alin Uzun.*

A trailer for the film can be seen in the [Events](#) section of the village website at www.bishopstone-salisbury.co.uk.

Entry for the film is **£6.00**. A cash bar with ices and snacks will be available. If possible, please book in advance with Caroline Ash on (01722) 781044.

The following Moviola show will be on **Friday 15th March** with the film 'The Great Escaper'. (This date is earlier in the month than usual due to hall availability).

BISHOPSTONE COMMUNITY LUNCHESES

The **February** lunch will be on **Wednesday 7th** with speaker Amber Cotton on the subject of nutrition.

Times as usual: **12.00 noon for 12.30 pm**. Advance booking is essential.

Please telephone Caroline Ash on (01722) 781044 and advise her of any dietary requirements. The cost is £7.50 for a two-course lunch and a drink.

The **March** lunch will be on **Wednesday the 6th** with Francis Taylor talking about "Angkor, The Capital of the Khmer Empire". The last lunch of the season will be on **April the 3rd** when speaker Naomi Oosthuizen will be talking about 'Decluttering'.

FUTURE EVENTS

The Spring Fayre this year will be on **Saturday 18th May** between **10.30am** and **12.00noon**.

The Village Hall Annual General Meeting will be on **Monday 20th May at 7.30pm**

HALL BOOKINGS FOR SOCIAL EVENTS AND WORKSHOPS

Both halls are available for hire. To enquire or make a booking, please contact the bookings secretary Margaret Barter (01722) 780471

BISHOPSTONE PLAYGROUP

The playgroup meets on Friday mornings during term time from 9.30 – 11.00 am. Breastfeeding support is available from qualified breastfeeding counsellor Cally Edwards and trained peer supporters. Find further information on our Facebook page *Bishopstone Playgroup* or contact Cally on callyedwards@me.com or 07968 797 168.

"EXTEND" EXERCISE CLASSES

For further information about these exercise classes contact Jenny on 01722 780863, email: jennyberwynjones@yahoo.co.uk

PILATES AT BISHOPSTONE

For further information contact Claudine on 07788 587937 or email: claudineblake@aol.com

YOGA WITH HANNAH

For more details please contact Hannah Stocker at 0773 856 1888 or by email: yoga_with_hannah@outlook.com.

SARUM SPINNERS AND WEAVERS

For more detail about the group please contact Les Smith on 01722 780761.

BISHOPSTONE VILLAGE HALL

QUIZ NIGHT



Saturday 2nd March

Doors open 7.00pm for 7.30pm start

Put together a table of four and get those grey cells working. (We can pair you up with others if you are not a full table.)

£50 for a table of four (or £12.50 each), to include supper and a cash bar.

Book online via

bvhticketoffice@btinternet.com

or call Caroline on (01722) 781044

Bishopstone Rugby Enthusiasts

Once again the England games at the 2024 Guinness Six Nations will be shown live at the Village Hall.

Details of the games are below. Doors open 45 minutes before kick off.
Free entrance with cash/card bar and Bacon & Sausage baps available.

For further details please contact Andy Stocker (07590 841135)

England Six Nations Matches

Saturday 3rd Feb versus Italy. Kick off 14:15

Saturday 10th Feb versus Wales. Kick off 16:45

Saturday 24th Feb versus Scotland. Kick off 16:45

Saturday 9th Mar versus Ireland. Kick off 16:45

Saturday 16th Mar versus France. Kick off 20:00



Bishopstone Village Hall rates for private hire

Bishopstone Village Hall has 2 rooms that are available for hire for a wide range of functions. The larger room is ideal for children's parties with lots of space for running around. It can also accommodate wedding receptions, charity functions and large family celebrations.

The smaller room (The Memorial Room) is a good size for meetings and smaller gatherings.

The modern kitchen is spacious and fully equipped with an electric catering range, a professional 4 minute dishwasher, water boiler, hot cupboard, microwave oven, 2 fridges and a freezer, all suitable for professional caterers. There is also glassware, crockery and cutlery for over 80 people.

The hire charges include use of heating and electricity.

The rates are currently:

	Villagers	Non Villagers
Hire of both rooms (With full use of the kitchen)	£15 per hour	£20 per hour
Hire of both rooms (With tea making facilities but no other electrical kitchen equipment)	£10 per hour	£15 per hour
Full use of the kitchen <u>only</u>	£10 per hour	£15 per hour
Weddings – per event/day	£150	£250
Parties – per event/day	£100	£150

Broadband

An additional charge is made for use of the broadband connection of £6 per hour with a maximum of £25 per day.

Large projection screen

Use of this professional quality screen is charged at an additional £10 per event.

The hire period must include time to set up and clear away after the event.

For further information and bookings contact: Margaret Barter 01722 780471

Chalke Valley Community Support

POLICE

Call 999 in an emergency: an emergency is when someone is being threatened or at risk of getting injured, or a crime is in progress.

Call 101 for non-emergencies: such as reporting a crime that has already taken place, non-urgent incident, contacting local officers etc

To contact your Community Policing Team about a community-related matter, such as a school visit, then please email SalisburyAreaCPT@wiltshire.police.uk

Please note that this mailbox is not monitored 24/7.

You are unable to report crimes of any type via email and please do not report any situations that require an urgent response.

You can follow us on:

Facebook - www.facebook.com/salisburypolice

Twitter - www.twitter.com/SouthWiltsCPT

Community Messaging: Sign up to Community Messaging for news and updates from your local policing team: www.wiltsmessaging.co.uk

Sixpenny Handley and Chalke Valley Practice

Doves Meadow Surgery, Broad Chalke: 01722 780282

Broadchalke Surgery is now open on Tuesdays and Thursdays

Sixpenny Handley Surgery: 01725 552500

www.sixpennydocs.co.uk



MOBILE LIBRARY

The Mobile Library is back in action and will be calling at The Styles in Bishopstone between 1115-1135 on the following Thursdays:

15 February, 14 March, 11 April, 9 May, 6 June, 4 July



**Coombe
Bissett
Stores**

www.coombebissettstores.co.uk

shop@coombebissettstores.co.uk Tel: 01722 718852

OPENING HOURS, SHOP AND POST OFFICE

Mon-Fri: 7am-6pm, Sat: 7am-1pm

**Chalke
Valley
Stores
Broadchalke**

w: www.chalkevalleystores.co.uk

e: info@chalkevalleystores.co.uk Tel: 01722 780998

OPENING HOURS

Shop: Weekdays 9am - 5pm (until 4pm on Saturdays)

Post Office: Monday, Tuesday & Thursday 9:30am- 1:30pm

CHALKE VALLEY LINK SCHEME

exists to provide transport and other good neighbour support in a local, personal and friendly way to members of the Chalke Valley community who need it.

If you live between Bishopstone and Bodenham or Britford and need help getting to your surgery/hospital appointments/local shopping or to visit family members in hospital, **please phone 01722 718780 to reach our Joint Transport Coordinators (Anna Mynott, Debby Underhill or Roger Brown) who will be on duty in rotation.**

There is no charge, but you are invited to make a donation towards our administrative costs. Our co-ordinators are all volunteers and there may be occasions when you will be asked to leave a message which will be answered as soon as possible. Our drivers are all volunteers too, so please give us as much notice as possible so that we may find a volunteer who is available.

We are always looking for Volunteer Drivers to enable us to continue to provide a useful service for our community. If you feel you can help - you won't be committed to any particular date or time, only when you are free - please contact any of the above for further information.

Registered Charity No 1076335

Queen's Award for Voluntary Service

Staying in Touch

STaB magazine is a vital source of communication in the village, keeping everyone informed as to what is happening locally. However, the Covid-19 pandemic has highlighted the fact that situations can change very rapidly. To keep up to date with what is going on there are two other important sources of information in Bishopstone - the village website and our own WhatsApp network.

The village website – www.bishopstone-salisbury.co.uk is updated in real time and carries all the latest news on issues that affect the village.



The Bishopstone Network is a WhatsApp messaging service that has more than proved its worth during the pandemic, and more recently during the storms when residents were able to report fallen trees and blocked roads to the Emergency Planning Officer. Information can be instantly shared to your mobile phone about support services being provided in the village and on a variety of other matters – everything from the length of electricity black outs to what is available from the White Hart take-away service! You will need to download the App to your phone and then contact Piers Edwards (piersgedwards@gmail.com or 07920 475009) or Kate Pendlenton (kmpendlenton@hotmail.com or 07769202200) and ask to be added to the group.

Salisbury Foodbank

Thank you for your donations before Christmas, they totalled 8.9kg.

When you get to read this in February I will be on my way back from a month in New Zealand, so although there is no report as such I just want to let you know that any donations left at my house will have either been taken to the Foodbank by my daughter, if she has had the time between all her working hours, or will be safely awaiting my return and I will deliver them as soon as I can after I get home.

Anything that doesn't need cooking is what they are asking for at the moment to make life easier for those in need to save money on fuel: tinned meat, fish, vegetables and desserts, also long life milk and drinks are always appreciated.

Thank you for your continued support.

Judy Barrett



NEWS FLASH

The Parish Council has now installed a third public access heart defibrillator in the bus shelter near Church Lane. It is the same model as those already installed in the kiosk opposite Pitts Lane and at the Village Hall. It is fully automated – which means that the machine evaluates the heart rhythm once the pads are connected and delivers a shock without any rescuer assistance. Further details will be included in the next edition of STaB and a video on its use will be shown at the Annual Parish Meeting on 14th March.

Chalke Valley Churches' 2024 Lent Appeal for

RISE:61

You are invited to a Bishopstone Coffee Morning

10.30am - 12 noon

Tuesday 20th February at 12 The Croft
with Shirley Cooke

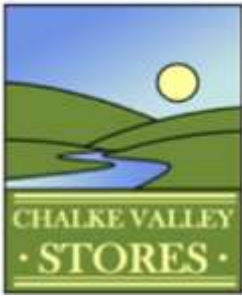
or

Saturday 23rd March at Wheelwright Cottage
with Anne & Alan Stutchbury

It would help to contact Sarah Seal (780305) if you are coming.

If you aren't able to join us, but would like to make a donation, Sarah will have the details.

Rise:61 is a charity based on Bemerton Heath working with young people to provide positive opportunities for self-development. Through sport, mentoring, community projects and social enterprises they empower them to redirect their futures.



***Shop at the heart of the Community
Owned by YOU, Run by YOU, Here for YOU.***

w: www.chalkevalleystores.co.uk | e: info@chalkevalleystores.co.uk | Tel: 01722 780998

OPENING HOURS

Shop: Weekdays 9.00am - 5pm (until 1pm on Saturdays)

Coffee Shop: Weekdays 10am - 3.30pm (until Midday 12pm on Saturdays)

Post Office: Monday, Tuesday & Thursday 9.30am to 1pm

This month's newsletter has been inspired by Tony, who wanted to make sure that everyone knows what a terrific job our many volunteers do in offering a wonderful service to us all in the Villages who use the Hub. They are essential to him and his small team of staff; he could not manage without you all.

So, in his own words, here are his feelings, as well as some News:

"We wanted to mark the occasion of this month's letter by recognising all of our incredible volunteers and thanking them for their unwavering support to the community.

For the last 10 years, volunteers have been at the heart of our Community Shop and Café (THE HUB) by supporting both me and the staff and most especially you, our Customers, to ensure the shop remained open whatever the weather, adapting during the challenging Covid lockdowns and the operation of our cafe, embracing change and learning new skills.

With opportunities for Duke of Edinburgh volunteering and work experience students, there's something for everyone behind the counter, in the cafe or in the back office. If you're interested to join as a volunteer, just send us a message or pop into the shop for a chat with Tony, we'd love to hear from you.

Here at the HUB we try hard to provide some of your everyday needs. So, whether it's a snack or a drink, pet food or a pasta sauce for dinner, pop in and take a look at the large range of products available.

Exciting news! Our best seller has been the Ciabattas, new on our menu in January. Come into our Cafe for our full list of filling options. These are available from Monday to Friday, so make sure you stop by to try one soon!

Just recently in January, despite the cold weather, we held a wonderful URC and CoE Ecumenical Service led by our own Katie followed by Lunch on Sunday 21st January. Thanks to those of you who joined us, we hope you enjoyed it too! A massive thank you to everyone who supported us and to those who contributed some funds."

Editor's note: The lunch and wine were very kindly donated, principally by Tony and his Family.

Home deliveries: If you need a delivery, please call the Shop on **01722 780998**.

NB There is a Trussell Trust Collection Point in the Hub for any donations of foodstuffs you may wish to make. Your generosity, especially during this cold weather, will help those most in need.

Flood Preparedness

By Piers Edwards

It has been 10 years since we had significant flooding in the valley. Now my crystal ball is in for repair, but these sorts of events do seem to appear to recur on a 10 year cycle. In 2024 we may be in for a wet start to the year, and this may lead to flooding akin to that experienced in 2014. Lessons were learnt following that event and improvements have been made in how the river is managed and how we prepare and respond to incidents. We are fortunate to have two volunteer Flood Wardens who divide up the Ebbles east and west of the bridge at Faulston: Nigel Peasley (07761 463737) west and Michael Pratt (07798 607742) east. We have a limited amount of flood stores including petrol and electric pumps, a generator, lights, sandbags and sand, gel bags, plastic sheeting and road signs. I take the lead on Emergency Planning on behalf of the Parish Council, and we are your team, here to help you.

To prevent flooding affecting your property it is advised that you establish what the risks are, how flooding might affect your property, create a plan, sign up for flood alerts and then implement your plan when flooding is expected. This is not something that can be done at the last minute, nor is it something you need to do on your own, help is available, if you would like help, please contact either of the Flood Wardens or Piers Edwards (07920 475009).

Flooding types: There are three broad types of flooding which may affect you:

Fluvial – the river breaking its banks, likely to be full of silt and potentially contaminated with sewage.

Groundwater – water under the ground (the water table) rises to the surface can affect cellars and it is usually very clear. This can create problems for septic tanks. Frequently we experience springs in the valley which then becomes surface water.

Surface – Sometime known as flash flooding. Runoff water which has not soaked into the ground, this can appear with very little warning and is likely to be fast flowing and muddy.

Flood Alerts: The Environment Agency (EA) issue Flood Alerts for both the River Ebbles and Groundwater in the valley which you can sign up to receive as a phone call, SMS and/or e-mail as well as via a variety of social media. Google “Sign up for flood warnings”. I share information about these alerts on the Bishopstone Network WhatsApp group and it is not my intention to cause alarm but rather to help.

The alerts come in three levels:



Flood Alert: Flooding possible, be prepared.



Flood Warning: Flooding expected, **act now**.



Severe Flood Warning: Severe flooding, danger to life.

The EA has published a lot of excellent guides to inform and assist the public. It is also possible to see the level of the River Ebble in real time at both Ebbesbourne Wake and Nunton Bridge which gives an idea of how the river is behaving. The borehole at Windwhistle Farm is also available online and that helps to give us an idea of how likely the groundwater is to be a problem.

Recommended Actions by Parishioners: We would recommend that residents follow this process:

- Assess and understand the risks
- Create a flood plan
- Register for the EA Flood Alerts
- Act early
- Consider your neighbours

Parish Council: The Parish Council has no statutory powers around flooding nor is it obliged to act, however, we do want to help. We cannot compel either a Landowner or Riparian Owner (someone who owns a stretch of the river) to do anything, however, we do ask people to act considerately and think about the impact they might have on other people. River management is a team game and there is a balance to be struck between ensuring that the river flows downstream and does not break its banks in the wrong place as well as maintaining the habitat for flora and fauna. We are, however, keen that the river breaks its banks and flows into the large water meadows between Pitts Lane and Church Lane where 1,000s of gallons of water can be held which helps Stratford Tony and Coombe Bissett. Please read the Emergency Plan which is available for you via the Village Website under the Parish Council tab [[Home - bishopstone-salisbury.co.uk](http://Home-bishopstone-salisbury.co.uk)].

The responsibility for flood protection of a property rests with the homeowner; we can advise, signpost residents to more formal advice, put people in touch with others whose first hand experience may be helpful but we can't implement your plan. We will try to respond but we cannot guarantee an immediate response service. If there is enough interest I will prepare a workshop to go into more detail and demonstrate some flood prevention methods. As a team we will always try to help and come to see you at your property to support you. We do ask you to plan ahead.

Bishopstone's Water Meadows

“From the later part of the seventeenth century to the latter part of the nineteenth century the floated water-meadow was one of the greatest achievements of English agriculture and an integral part of the sheep-and-corn husbandry of the down-lands of Wiltshire, Dorset, Berkshire and Hampshire. In Chalk Wiltshire the overwhelming majority of the several and common meadows by the stream-side were floated.”

Eric Kerridge - The floating of the Wiltshire water meadows - Wiltshire Archaeological and Natural History Magazine 1953

HISTORY

The prime reason for the development of water meadows in parts of England, especially Wiltshire, was the dramatic increase in population of England from 2.5 million in 1558 to over 7 million by the early 1700s. At the end of winter new grass still had to appear and hay from the previous year was exhausted creating what was known of at the time as the "hungry gap" for livestock and consequently for humans!

Records show there was pressure at the time to increase arable acreage and the size of flocks. It became clear that the solution was to irrigate meadows to increase early grass and close this "hungry gap". Though the idea is said to have come from Herefordshire about 1610 the initiative was apparently taken up by the Earls of Pembroke on their South Wiltshire estates to add value to the sheep and corn cycle by the use of "floated meadows".

CHARACTERISTICS

The essential characteristics of a floated water-meadow are a head of water on the river and a network of structured watercourses to create a flow down a shallow evenly sloping valley floor. The network would consist of a main carriage from the river with hatches feeding a series of carriers along ridges with further hatches or stops to aid control. As long as the water temperature was above 5.5 deg grass would flourish. In effect it was a network that allowed the meadow to be irrigated with water from Michelmas (29 September) to encourage early grass and enable sheep and lambs to be put to the meadows in March.

Examples of such a system within our Parish can still be seen in the meadows to the east of Pitts Lane extending down to the fields just west of the church. See Figs 1 and 2 on the following page. A quick look on Google Maps or Google Earth clearly show the outline of what must have been a fuller system within and beyond the village. Better maintained systems still exist and are maintained in Harnham.



Fig 1 - Old hatches to feed the main carriage



Fig 2 - An old carrier in the water meadow

Unfortunately toward the end of the 19th Century the floated meadow practise began to decline due to the use of swedes, turnips and other food for sheep. Quite when or why the water-meadows in Bishopstone ceased to function is not known by the author.

FLOOD CONTROL TODAY

In 2013-14 the village experienced major flooding with several properties badly affected. The reoccurrence of high water levels this year has raised the issue of why what are sometimes incorrectly called flood meadows (the old floated water meadows) are not used. Indeed there was considerable debate by the village Emergency Planning Group with both the Environment Agency and the Cranborne Chase Ebbles River Project Team in 2019-21 about the possibility of reopening in some way the main carriage and carriers for flood alleviation.

Realistically this would require major excavation, the permission of land-owners and, most importantly, annual maintenance. The original water meadows were looked after by Drowners who dug out and cleared the carriers and maintained the hatch system that controlled the water flow. Simply stated - this is unlikely to happen today!

Nevertheless, as has already happened this year, excess water that has spilled over the river banks in the village has flowed down through some of the old carriers in the water meadows and has helped reduce some water levels.

As the old system extends down to the West of Coombe Bissett to Homington it has, in recent weeks, taken thousands of gallons of water out of the main river.

Continued over

"One man's drainage is another man's flood." - Agricultural saying.

Further detail on the location and construction of the local system is in "Wiltshire Water Meadows" by Michael Cowan - ISBN 0-946418-38-1

RJS



Rambling over Christmas with Jazzie



Sorry we missed the Winter edition, but my offer was too late! Deadline missed, so now a bit for the Spring. The Poppy Appeal is well over now and will be under new management this year. The Editor has just been on to me to get writing, so here goes:

Jazzie remains very well, and very alert despite the worse weather. She is still not keen on going out in the rain - like me - but is happy with the freezing cold. Her wee tootsies get very cold!! Her coat has grown since last October, so she remains nice and warm, and an excellent hot water bottle on our bed!

The hedgehogs are giving concern. We have not seen any since before Christmas. We have given them new hay in their hutches, and continue nocturnal feeding, with Jazzie's encouragement. They are probably sleeping during the wet and cold, and the food is eaten, even though the jackdaws help in the morning! We trust the little hedgehoglets will grow fat enough to survive whatever the winter throws at us.



The Christmas Fayre in the Village Hall was a great success, and Jo and I sold quite a bit of stuff, including three paintings. Thank you to the buyers. We hope the buyers enjoy their bangles, ornaments, and paintings.

Our garden is full of dunnocks and finches enjoying the fat-balls and seed we put out. They keep J amused as she watches them and chases the pigeons from the lawn. We hope to see the goldfinches back, as we used to have charms on the feeder, but hardly any this year. The blackbirds remain in full voice as the sunny evenings close in. The Croucheston horses still give J great pleasure on her favourite walk, and the sheep find her very interesting, as they follow us out of the field. But her main joy is meeting Dipper as we pass the stables.

The Ebble is still racing along the valley at a new high. It keeps the Flood Wardens and the Parish Council very busy. But I think the river was even higher ten years ago causing those floods which made for much extra work, and some abuse!! However, all is well this time. Jo's gardening goes from strength to strength, and the beating is about to come to its annual end. However, we have a good stock of game for the summer in the freezer!

Jazzie and I will have to start work in our garden now that the weather is a bit better. Working in the rain and the freezing cold is no fun at my age, nor at Jazzie's size! We all need a bit of drier and warmer weather now.



Looking forward to seeing all our friends again on our walks, Jazzie!

James Thompson Jan23



Coombe Bissett CE VA Primary School

“Soar on wings like eagles, run and not grow weary, walk and not be faint”

Isaiah 40:31

It was so last year....

As well as the festive fun of parties and our whole school Christmas meal, Oak and Elm shared wonderful **nativities** with the rest of the school, families and friends in St Michael and All Angels where our **Christingle service** was also held. It was so lovely to see the church full of pupils, parents, staff and governors who all contributed to the readings, prayers and singing – the perfect blend of reverence and joy.



December also brought our **SIAMS inspection** (Statutory Inspection of Anglican and Methodist Schools) and report which celebrated all that makes our small school so special. You may have read about this in the Salisbury Journal, but we were so delighted that the inspector recognised the many strengths in the school, highlighting the strong Christian vision and values embedded in all that the school does, the wonderful sense of community, the culture of well-being and nurture, the committed staff team, the caring nature of the pupils, well-planned Collective Worship, engaging and inspiring RE lessons and a strong partnership with the village church.



Our Headteacher Mrs Haworth said she could not be prouder of the report and all that it says about the school, adding: "It is testament to the children, staff, governors and parent body that this report reflects the commitment of the whole school community to 'soar on wings like eagles'.

And now it's 2024...

Although the term is barely 3 weeks old, there are already highlights to report. Our value in the Spotlight this term is '**Commitment**' and we have talked about how we can show commitment to our school through our attitude to learning, looking after school equipment, wearing our uniform with pride and committing ourselves to making our school and the people in it the best they can possibly be. We are also showing a commitment to helping people in the wider world by joining Chalke Valley Churches in collecting pencils for children at **Cueibet Church Primary School** in South Sudan.

In our classes

Oak regularly enjoy scientific nature walks around the village and this month have been looking for signs of winter: ice, snow, hard ground, berries and bulbs.



Elm have been learning about rhythm in their music: playing instruments and learning 'call and response' songs.



Fir have been sorting and classifying different types of rocks and their term of swimming lessons is going.... well, swimmingly.

And sound and music have been areas of focus in **Ash** class: string telephones, soundproof boxes and ukuleles.



Before this half term ends, all the children in school will have First Aid training with the **Wiltshire Air Ambulance** and our very first **Church Learning Day**: an opportunity to spend time exploring unseen areas of the parish church and asking questions.

Notes from a Nutritionist by Amber Cotton Nutrition

Welcome to the first Notes from a Nutritionist of 2024. For those of you who have received my monthly newsletter, you will have read that venison is in season at the moment, and so this month I'm offering you a quick and tasty recipe that makes the most of this under-used source of protein.

Whilst researching venison recipes I came across one for 'Salisbury Steaks'! Originating in the US (rather than Wiltshire), Salisbury Steaks were devised by James H. Salisbury in the late 1890s. They are traditionally made with beef, but instead I'm using venison which is lower in saturated fat than other red meats, is a great source of iron and zinc, and is filled with an array of essential B vitamins that are critical for brain health (among other things).

In 100g of venison there's approximately 24g of protein which is a decent serving size for most adults. Venison, like all animal products, is a 'complete' protein which means it contains all the essential amino acids that our bodies can't make on their own (they are called essential because we must get them from our food). It might surprise you, but protein isn't just about building muscles. Good protein intake is needed to support the immune system, to aid with hormone production and to make crucial enzymes that are essential for digestion, liver function and much more.

Salisbury Steaks are served in the US with gravy and mashed potatoes. Instead I suggest you serve it with seasonal side dishes of purple sprouting broccoli, and mashed carrot and swede which are more nutrient-dense and lower in carbs.

Purple sprouting broccoli provides a welcome addition to the winter vegetable larder and is celebrated for its superior nutrient levels and importance to health. It's rich in vitamin C which contributes to protecting your cells from damage, supports your immune system, contributes to the health of your skin, blood vessels and bones, and reduces tiredness and fatigue. It also contains high amounts of vitamin K, which is essential for blood clotting, is vital for good bone health, and is rich in my favourite nutrient, folate.

Swede has a wide range of health benefits due to its excellent source of vitamins and nutrients. This healthy vegetable is particularly high in vitamins C, E, K and B6, as well as being a good source of manganese, potassium, magnesium, calcium, iron, zinc, carotene and fibre. When combined with carrots which are themselves packed with essential vitamins, minerals and anti-inflammatory antioxidants, you create a delicious and healthy alternative to mashed potato with nearly half the amount of carbs, fewer calories and more fibre.

If you'd like to look back at any previous recipes that have appeared in STaB, or if you would like to receive more detailed health tips and advice, then please go to my website, www.ambercotton.co.uk where you will find all my previous recipes, and can sign up for my monthly newsletter.

Best wishes for a lovely February, Amber

Recipe of the Month - Venison Salisbury Steaks with Purple Sprouting Broccoli and Carrot and Swede Mash

450g ground venison (use beef mince if preferred)
25g breadcrumbs
1 medium onion (halved)
30g cheddar cheese (finely grated)
1 tbsp dried parsley or mixed herbs
2 garlic cloves (crushed)
2 tbsps olive oil
150g mushrooms (sliced)
2 tbsps arrowroot powder
475ml beef broth
Chopped fresh parsley (optional)

360g purple sprouting broccoli florets
400g carrots, scrubbed and chopped
400g swede, peeled and chopped
25g butter
2 tbsp crème fraiche
2 tbsp creamed horseradish (optional)
Salt and freshly ground black pepper

METHOD

In a bowl, grate half the onion and add the breadcrumbs to soak in the juices for 10 minutes. Add the meat, cheese, herbs, and one of the crushed garlic cloves. Use your hands to mix until thoroughly combined then divide into 4 equal-sized patties.

Heat half of the oil in a large frying pan over high heat. Add the steaks and cook for 1 minute on either side until gently browned (they will still be raw inside). Remove to a plate.

To make the gravy, heat the remaining oil on a medium heat then add the remaining chopped onion and the second crushed garlic clove. Cook for 2 minutes until the onions are translucent. Add the mushrooms and cook for a further 2-3 minutes. Sprinkle the arrowroot powder over the onions and mushrooms and stir to coat. Slowly pour in the beef broth and stir constantly until the gravy begins to thicken.

Reduce the heat and return the steaks to the frying pan. Cook for 5-7 minutes until the steaks are cooked through. If the gravy thickens too quickly, add more water. Once cooked, removed the steaks to a warmed plate. Taste the gravy and add salt and pepper to taste.

Cook the carrots and swede together in a saucepan of boiling salted water for 30–35 minutes, or until tender. Drain and allow to air-dry for 5 minutes before returning to the pan. Add the butter, crème fraîche and horseradish (if using), mash well and season with salt and pepper to taste.

Place the broccoli in a steamer basket over boiling water and cover. Steam for three to five minutes.

Serve the Salisbury Steaks topped with the mushroom gravy and some chopped fresh parsley, alongside the purple sprouting broccoli and the carrot and swede mash.



The Chalke History Festival announces a new name, a new look, and a programme to make your mouth water

Save the dates: 24th-30th June 2024

The Chalke History Festival - the biggest, most celebrated history festival in the world - will this year run from 24th to 30th June. To mark the start of a whole new chapter for the event it has announced a new name and a new look, with the website and branding being given an eye-catching makeover. Aided by the expertise of leading branding agency BLOOM and celebrated digital media agency Konekt, the festival is set to make a splash in 2024 using a fresh new logo, new social media handles and the new domain name www.chalkefestival.com - all reflecting an exciting moment in the history festival's life.

History has rarely been more important than now. The Chalke History Festival programme for 2024 will reflect this, dealing with themes and concerns that dominate our current lives. The festival planning team will also be mixing the timings up a little this year, so as to avoid a wall of events all running concurrently, and there will be an increase in the number of panels and discussions. The aim is to provoke more conversation and debate about how the past guides us to the present and helps us prepare for the future. The line-up will show the threads and patterns of history and help those who visit to think about our history in different ways, and also help people to contextualise and make sense of the current rather tumultuous world we live in.

A number of big household names - including James May, *The Rest Is History* duo Tom Holland and Dominic Sandbrook, Max Hastings, Bettany Hughes, musician and record producer Jakko Jakszyk, and Sathnam Sanghera - have already been signed up as well as a greater number of international speakers and experts.

There will be more performance this year, with no less than eight different acts and performers speaking around the site - every day and throughout the week - from light-hearted yarns through to expert traditional crafts people, and from the Iron Age through to the Second World War. In addition, there will be five main venues for talks and discussions, so there will be a huge amount on offer.

The layout of the site will be slightly different too as the team has given thought to the whole experience of how visitors can view the many events on offer. The main tent will be set-dressed on the stage, the second venue will be a vaudeville-style Spiegel tent and the outdoor stage will be a honeycomb dome design and closer to the hub of the main activities. There will also be more live music, including an ABBA tribute act on the Friday night and a D-Day Dance on the Saturday evening. Each night there will be a different live music act, as well as on the Sunday a five-course lunchtime historical banquet.

News of programme developments will be announced over the coming months and those interested in attending are encouraged to keep checking on the new website and the festival social media channels for all the latest announcements. Tickets will go on general release to the public in April.

Police Bulletin

*A monthly newsletter from
Philip Wilkinson, Police and Crime
Commissioner for Wiltshire.*



Delivering a police service which meets the needs of its communities has never been more important – or challenging. I know residents want greater public engagement with officers, more public access to officers and an increased officer presence at community level.

Wiltshire Police is addressing this with the introduction of a new operating model with neighbourhood teams providing visible, neighbourhood-focused, policing and delivering a recent improvement programme to provide a better-quality service 999 and 101 callers.

My commitment has been to invest in mobile police stations so our rural communities receive the same level of service, improve Melksham Custody so it is fit-for-purpose and the future, invest in training facilities to provide an exemplary environment to equip our police officers to keep you safe and to challenge the force to consistently provide a quality service to residents – regardless of location.

All of this is underpinned by the importance of investment in police ‘estate’ to support the delivery of a policing service I know our residents want - and deserve.

My newly-launched Estates Strategy sets out this vision. I believe Wiltshire Police will be better equipped to provide the policing service our communities want if they have the infrastructure which supports them to respond more effectively and efficiently.

The strategy ensures we have well-placed police stations and hubs providing a base for our staff to work smarter, adapt to changing crime and, more importantly, ensuring that not only will communities be safer but they will start to feel safer too.

You can read the full strategy on my website wiltshire-pcc.gov.uk

Contact Information

Amy Pantall

Campaigns and Communications Manager

OPCC

amy.pantall@wiltshire.police.uk

SALE OF SALES

HUGE DISCOUNTS FROM QUALITY TRADERS

FRIDAY 2ND FEBRUARY 2024
COOMBE BISSETT VILLAGE HALL, SP5 4LU
10 - 3PM ADMISSION £4



DESIGNER JEWELLERY ★ LEATHER BAGS ★ CLOTHES
ACCESSORIES ★ CARDS ★ EMMA BRIDGEWATER TINS
HOMEWARE ★ FAUX FLOWERS ★ LOCAL PRODUCE
BOTTLE STALL ★ AND MUCH MORE

CAFE SERVING DELICIOUS LUNCHES AND CAKES

ALL PROCEEDS TO BENEFIT



CRESS achieves Big Give Christmas Challenge

CRESS, a Broadchalke based charity, has been successful in its first Big Give Christmas Challenge which took place at the beginning of December, raising £14,150.25.

CRESS works in rural northern Uganda supporting the refugee and poor local population, most of whom live on under \$2 a day. The funds raised are for our 76 Savings Groups with 2,292 registered members, 75% of whom are women. We support their learning and training in business and agriculture so that they can support their businesses and their families. Specifically the funds will go towards their savings conferences, where they gather together and share learning and inspiration.

Caroline Lamb, CRESS' Founder said "The response to our Big Give has been amazing and we are so thankful to everyone who has chosen to donate to CRESS this Christmas. Having just visited Uganda, I have seen first-hand the improvement in members' ability to afford to build weather-proof homes, pay for medical aid and education for their children. Most importantly for them, their mental health has improved as their hope and prospects have increased. Thank you all."

To find out more about CRESS's projects visit <https://cressuk.org>

Fovant Badges Society

TOYS ADVOCATING BEEFS (anag)
& the REPARTITION SQUAD (ditto)

Way back in March 2023 when a film crew showed up on Fovant Down we at *Toys Advocating Beefs* were sworn to secrecy as to this TV programme and its activities here. Such was the secrecy needed we were only observed by a Lady with a Dog so we thought our mutual secret safe, until an article appeared in this Grand Organ of Information in Spring 2023. All couched in non specific anagrams of course.

However, sadly for those that got the joke, or those now wishing to see what the folk at the *Repartition Squad* got up, to it will be too late to see the broadcast on 12th December 2023 at 3.45pm BBC1 as such was the secrecy about this we were told too late for December's addition. However all 5 episodes of the current run are available on iPlayer from 13th December 2023.

Our Badges are now in fine fettle thanks to Kevin Galacher and Freddie of KDC Ltd and ready for the winter, or the next TV crew !

The Seasons Greetings, or as we like to say "*Engrossing Teases*", to you all .





Upcoming Events

New Menu with Seasonal favourites

Breakfast served last Saturday of the Month
9.30am - 11am

Steak Night - Every Tuesday Evening

Fish & Fizz Fridays - Every Friday Evening

Quiz Night last Thursday of Every Month
Teams of 4

Free Entry with the chance to win a complimentary food voucher

Guinness Six Nation Rugby Live on the Big Screen
Starts Friday 2nd Feb

Chinese New Year 10th Feb
Chinese Buffet served

Valentines Set Menu
Wednesday 14th Feb

Book Now for Mothering Sunday 10th March

Book Now for Easter Sunday 31st March

Call to Book now 01722 780244

Sampson Coward
SOLICITORS

with

Whitehead Vizard

Legal Excellence



→ Family → Employment → Property
→ Litigation & Disputes → Commercial → Wills & Probate

St Mary's Chambers, 51 New Street, Salisbury, Wiltshire SP1 2PH

t: 01722 410664 e: mail@sampsoncoward.co.uk

www.sampsoncoward.co.uk



Our expert Wills, Probate and Estate Planning department can advise and support you when it comes to protecting your family for the future.

Will Writing
Lasting Powers of Attorney
Trusts
Probate
Estate Planning
Inheritance Tax

Contact the team today to find out how we can support you.

Because your family matters

45 Castle Street, Salisbury, SP1 3SS

01722 412000

www.parkerbullen.com

PARKER
BULLEN
SOLICITORS

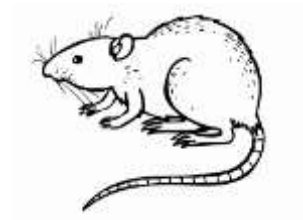
Parker Bullen LLP is authorised & regulated by the Solicitors Regulation Authority SRA number 535414



BASED IN FOVANT

01722 714308
07541 358570

- Local
- BPCA trained
- RSPH qualified
- Sensible pricing
- Fully insured
- Reliable
- Discreet
- Evening & weekends



www.greystonespestcontrol.com

michael@greystonespestcontrol.com



Your local property expert

No-one understands the local property market as well as us. We provide our clients with the very best representation and provide a service without compromise. We're here for you, whatever you need.

**WOOLLEY
&
WALLIS**

Salisbury
01722 424524

w-w.co.uk

Coombe Bissett Stores and Post Office

Homington Road

Coombe Bissett SP5 4LR

shop@coombebissettstores.co.uk

01722 718852

facebook.com/CoombeBissettStoresNew

Open Monday to Friday 7:00am to 6:00pm

Saturday 7:00am to 1:00pm

closed Sunday and Bank Holidays

When the shop is open, so is the Post Office



FLAMSTONE LOGS

Air & Kiln Dried Logs for Sale

Various load sizes available

Tree Surgery Services

NPTC Trained - Fully Insured - Public Liability

For further information or a free quotation

Please Contact

John 07768 894043 or Henry 07807 892510

Your local garage **Bow Engineering** (formally **Robin Higdon Motors**), based in **Bishopstone**.

Offering expert services and customer care at competitive prices.

Call Lee for all your vehicle needs – 07876 141212



- ✕ Servicing
- ✕ Repairs
- ✕ Diagnostics
- ✕ Welding
- ✕ New engines/ gearboxes etc
- ✕ Electricals
- ✕ MOTs arranged

Diligent Master Technician with 20+ years experience working for main dealerships (Land Rover, Mercedes and BMW/Mini). Specialising in Land Rover but tending to all makes and models.

Bow Engineering Limited | The Unit Croucheston Farm | The Cross | Bishopstone | Salisbury | SP5 4BW
07876 141212

Wessex Contract Services

*Fencing, Landscaping,
Ground Care & Maintenance*

Lee Curtis

Tel: 01722780842

Mob: 07875018317

Email: lee@wessexcontractservices.co.uk



GRAHAM DIMMER MOT CENTRE

MOT Tests on all types of vehicle up to 3,500kg
Servicing & General Repairs on all makes & models
Including **camper vans**
Specialist vehicle diagnostics
Air Conditioning repairs & re-gassing
Electronic Wheel Alignment
Free Courtesy Car

01722 328344

Avon House, Newton Road, Churchfields Salisbury, Wilts SP2 7QA

Email: info@grahamdimmermot.co.uk

www.grahamdimmermot.co.uk

S. WALLWORTH ELECTRICAL SERVICES LTD

FULLY QUALIFIED ELECTRICIAN, EMERGENCY REPAIRS

INSTALLATIONS – RE-WIRES, ELECTRICAL REPAIRS & TESTING

EXTRA SOCKETS & LIGHTING, NIGHT STORAGE HEATING, ELECTRIC SHOWERS

DOMESTIC & COMMERCIAL



FREE QUOTATIONS.

SIMON WALLWORTH

31 DEAN LANE, SIXPENNY HANDLEY

SALISBURY, WILTSHIRE

SP5 5PA

TEL: 01725 552545 MOB: 07826 928759

S.WALLWORTH@HOTMAIL.CO.UK



Is it time to rethink your garden?

- Professionally designed gardens
- Full or partial redesigns
- Planting design
- Garden advice and consultancy
- Increase your property's value

eleanorobornegardendesign.com
eogardendesign@gmail.com 07732 003557
 Chalke Valley, Wiltshire



Eleanor Osborne
 GARDEN DESIGN



For all your foam requirements,
 seat pads, sofas, camper vans
 and much more...

Upholstery fabrics also available
 Just give Katrina a call

- ☎ 07810661000
- ✉ info@khsoftfurnishings.com
- 🌐 www.khsoftfurnishings.com

**BY APPOINTMENT
 ONLY**

Oakley Business Park
 Dinton
 SP3 5EU

SELF STORAGE FACILITY



Safe, secure & convenient

Self-storage units for domestic or business use

All sizes available

On the A354 near Sixpenny Handley

Phone David 07971 869372 or Steph 07748 925810

01725 552557

Or email: info@dorsetandwiltsstorage.co.uk

www.dorsetandwiltsstorage.co.uk

STEVE'S
NEW FOREST GARDENS
I WOULD LIKE TO OFFER YOU THE FOLLOWING SERVICES

✓ Tree Work <i>All aspects of tree surgery including topping, pollarding, pruning & felling. Removal of diseased, dangerous & unwanted trees. Stump & Root removal.</i>	✓ Fencing <i>All kinds of fencing, gates, sheds etc. supplied and erected or repaired.</i>
✓ Hedge Work <i>All kinds of hedges and shrubs trimmed, lowered, tidied up etc. All waste removed & left tidy.</i>	✓ Gravel Driveways
✓ Turfing	✓ General Maintenance
✓ Top Soil	✓ Overgrown Garden Clearances
	✓ Shed, Garage etc. Clearances
	✓ Rubbish Removed

Don't delay - call today to book your appointment

FULLY LICENSED FOR ALL EQUIPMENT WITH DOCUMENTATION

FULLY INSURED - FREE ESTIMATES

 **07503 917 466**




Valley Contracting Services



- FENCING
- CONCRETE BREAKING
- SCRUB CLEARANCE
- MINOR EXCAVATIONS
- DITCH/CULVERT CLEARANCE
- MINOR DRAINAGE

Fully Insured - Public Liability
Free Quotations

Please contact Chris: Mobile: 07707 151234

Email: valscape712@yahoo.com

GARNETT PLASTERING & Building

- Plastering • Rendering • Dry Lining
- Painting & Decorating • General Building

07808 523348

garnettplasteringandbuilding@gmail.com

BURROW



Septic Tank Owners: register your interest in a fully-funded upgrade to a treatment plant.

Due to the Phosphate pollution in your local river catchment we are operating a septic tank replacement scheme using private funding.

We install wastewater treatment plants that remove almost all pollutants, with funding secured from planning applicants who need to create a positive impact on the environment.

Register on our website today.

burrow-environmental.com 01935 507 508

Felix Campbell

Tree and Grounds Maintenance

Strimming

Brushcutting (overgrown vegetation e.g brambles)

Tree services

Hedge Cutting

Log splitting & logs

Chipping

Email: felixcampbell124@gmail.com

Home: 01747 870393

Mobile: 07472402500

Fully insured and qualified

MADDY'S MENDING

ALL ALTERATIONS AND MENDING, FROM
BUTTONS TO BLINDS, CURTAINS TO CUSHIONS

No JOB Too Small!!!

CALL Maddy ON: 0777 4207 423

FREE COLLECTION AND DELIVERY

Pod & Pip

Workshop and Coffee Pod Open:

10-4pm Wednesday, Thursday and Friday

10am -12:30 Saturday

Fresh Flowers, Plants, Gifts, Homewares &
Clothes
Wedding, Event & Funeral Flowers

Ebble House, Stratford Tony 07766775869

www.podandpip.co.uk

NAOMI OOSTHUIZEN

LETTING CLUTTER GO

Professional Declutterer and Organiser

Services Included:
Declutter & Organise
the Home
Sorting Paperwork
Finding the Garden &
Outbuildings

Are things growing out of
control?
Would you like to feel
happier in your own home?
If you are feeling overwhelmed
at home from your belongings,
whether from a normal
busy life, a family crisis
like a loss of someone
close or a relationship
separation to moving house,
I can help you find your
way through it.

www.lettingcluttergo.co.uk
07900795158
naomi@lettingcluttergo.co.uk

Fully insured, DBS checked, and
member of APDO (www.apdo.co.uk)



For all your pest issues, Local, fully insured, fully qualified BPCA Member
Wasps, Rats, Mice, Cluster fly, Clothes Moth, Fleas, Squirrels, Bed bugs
Call now- 07711 259749 Email- info@wiltshirepestservices.co.uk



**Ben Ridgers-steer
Oil Boiler Servicing
and Repairs**



07534 262633
Ben_r_s@hotmail.com

LITTLE BANKSIDE

www.littlebankside.co.uk

Do you need extra space for visiting family & friends?
Self contained studio holiday let for 2 in Bishopstone.

Contact:
Hilary King
littlebankside@gmail.com
01722 780017

PODDINGTON COTTAGE

A newly refurbished one-bedroom detached annex in Bishopstone available for short Holiday Let. Well behaved dogs are welcome - maximum of 2 dogs. Fully fitted kitchen, parking for 2 cars, lounge with smart tv, Wi-Fi, dining area and shower room.

For more information, please contact Sandra on 07939626155 or email:

poddingtoncottage@btinternet.com

A warm welcome awaits.

Matthew Veale

Mobile Hairdresser Available 6 days per week

Reliable friendly service London Toni & Guy trained

Please call 01722 336821 or 07788 686829



Your local property expert

w-w.co.uk



Comfortable and cosy self-contained accommodation.

Little Bridge Studio

Bishopstone

Sleeps 3 plus cot.

Large open planned living space with wood burning stove.

Shower room and separate bathroom.

Contact: Alice Lyons - 07811455756

Johanna Thompson

Gardener

Qualified
Planting, plant identification, design

And general garden maintenance.

tresillian5croft@gmail.com
07730145031



**Charlotte Steel VTCT, IIHHT,
Complementary Therapist**

The Chapel, Church Street, Bowerchalke, Salisbury SP5 5AY

Tel: 01722 780107 Mobile 07811 944328, email cjsteel92@gmail.com

Hot Stone Massage: Full Body (90 minutes) £65, Back (1 hour) £50

Aromatherapy/Swedish Massage: Full Body (90 mins) £60, Back (1 hour) £45

Reflexology: Initial Consultation £38, Further Treatments £35

Facials: (including 15-minute back massage, 75 mins) £65

Peaceful therapy room with plenty of parking

Gift Vouchers Available

METAL ARTWORK

BLACKSMITHS & GENERAL ENGINEERS

01722 781212

www.metal-artwork.co.uk



Pregnant?

Looking for evidenced-based childbirth education?
Considering having an extra birth partner?

A doula can...

- Stay with you throughout labour and birth to help you achieve your specific choices
- Offer 1:1 breastfeeding and general feeding support
- Provide help at home for those first few days and weeks after birth

Doula Cally Edwards offers emotional and physical support to help you truly enjoy your pregnancy, birth and early days with your new baby



www.callyedwards.com

   @doulacally

Amber Cotton

Nutrition & Health

BSc (Hons), dipION, mBANT, mCNCH

Registered Nutritional
Therapist

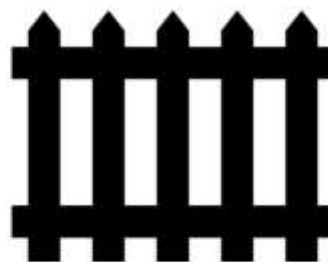
Please get in touch if you'd like to find out
how you can use the power of delicious food
to support good health

07435 520 772

amber@ambercotton.co.uk

www.ambercotton.co.uk

Ebble Fencing



- Bespoke Fences and Gates
- Professional Service
- 20+ Years Experience
- Fully Insured
- Free Quotations

07789 707959

www.ebblefencing.com

evolve

TREE SERVICES

call Stuart Larter for a free quote

07563 645043
01747 871753



Tree Specialist,
Fully Qualified and Insured

www.evolveetree.co.uk



Boiler Servicing & Maintenance

- Breakdowns - Repairs - Oil - Gas
- LPG -

Mark Benfield

01747 828689 or 07974 249287

mark@mabheatingservices.co.uk

Jennie Gilbert – Pottery

I make Stoneware pots for the home.
Perfect presents for you or your friends.
You're very welcome to come and visit
the workshop.

I also run 2 day pottery courses,
please call or email for details.

4 St. Martin's Workshops
Manor Farm
Fifield Bavant
Broad Chalke
Salisbury
SP5 5HT

01722 780402

www.jenniegilbert.com

jennie.gilbert@yahoo.co.uk



Jayne Lucas Hairdressing



I cover all aspects of
hairdressing for adults
and children in a lovely
relaxed salon setting
near Coombe Bissett
with easy *free* parking.

For enquiries & bookings please call:-

07771 625161

GRAYS STONE CARVING STUDIO



BESPOKE MEMORIALS & INSCRIPTIONS

**Creating memorials of celebration
and commemoration**

Individually designed, hand drawn and carved,
using traditional hand tools and techniques.
Made in collaboration with you.

Unit 2, Knowle Farm, Bowerchalke, Salisbury SP5 5BP
www.grays-stone-carving.co.uk
Henry M: 07766 464048 Tam M: 07919 258708

HIGH SPEC WINDOW CLEANING

Other Cleaning Services Include:

- Gutters
- Fascias
- Driveways
- Patios
- Conservatories
- Walls
- Greenhouses
- Cladding
- Solar Panels
- Paths

T: 01425 650894

M: 07879 426914

www.hs-cleaning.co.uk

Kevin Knight Clock & Watch Repairs

Free estimates given
Over 30 years experience

Tel 01722 331969

Mob 07900 928451

Email:

kevindavidknight@gmail.com

Tim Saunders Plumbing & Tiling Services

Complete Kitchens, Bathrooms & Wet rooms
Tanks, Cylinders, Pumps, Valves & Radiators
Taps, Basins, & Toilets
Unvented hot water system installation, repair
& servicing (G3 certificated)
Stuart Turner approved installer
Disabled/assisted living zero vat
installations/conversions
Wall & floor tiling
Free advice and estimates
Emergency repairs. No call out fees
Fully insured

07772 610190

Email: timsaundersps@gmail.com



2024 Advertising rates – based on A5 page

Our magazine is a source of information for all households in the parish used by residents as a handy directory of local news, events and services. It is delivered free to over 300 households, and also viewable online at <https://www.bishopstone-salisbury.co.uk/parish-magazine-stab>.

Prices below are per annum in bold. There is a significant discount for advertisers who choose to pay for all ten editions in advance (Aug/Sep & Dec/Jan are joint editions).

Full page 13x19cm £120 per annum	Half page 13x9.5cm £75 per annum	Quarter page Portrait 6.5x9.5cm £40 per annum	Quarter page Landscape 13x5cm £40 per annum
--	--	---	--

One off/occasional advertisements will cost slightly more per issue as follows:

<i>Full Page: £15.00 per issue</i>	<i>Half Page: £9.00 per issue</i>	<i>Quarter Page: £5.00 per issue</i>
------------------------------------	-----------------------------------	--------------------------------------

How to place your ad in STaB

1. Make a .pdf, .jpeg, or Word file of your ad, making sure it is the correct size for publication (see table of sizes and prices above) and that it will reproduce well in black and white. We cannot design or make advertisements for you.
2. E-mail the file to Rob Pendleton (stabads@outlook.com), stating which of the above sizes you would like.
3. The deadline for publication is the 15th of each month. Please send ad as early as possible as the e-mails will not be checked daily. If you do not send a new ad by this date, we will use the most up to date version we have.
4. When you have placed your order, you will receive an invoice with details of payment by cheque or bank transfer. Please pay within 14 days and make sure you include your reference number and business name. Donations are also always welcome.
5. The Editor reserves the right to edit all contributions.

How to pay:

Cheques: Please write your <u>invoice number</u> on the back	Bank transfer: Please use <u>your name</u> & <u>invoice number</u> for reference
Payable to: Bishopstone Parochial Church Council Send to: The Treasurer, Ebble Cottage, Mill Lane, Bishopstone, SP5 4BG	Bank: Lloyds TSB Sort Code: 30-97-41 Account Number: 00665145 Account Name: PCC Bishopstone Church

Terms – payment within 14 days

BISHOPSTONE PARISH COUNCIL

Councillors	Telephone
Ali Thorne (Chairman)	07768 514133
Piers Edwards (Vice Chairman)	01722 780079
Norman Barter	01722 780471
Anita Smith	01722 781213
Michelle Tatner	07968 842525
Simon Williams	01722 780905
Nicky Rigg	07786 806914
Parish Clerk	
Mike Ash Lower Thatch Flamstone Street Bishopstone SP5 4BZ	01722 781044 bishopstoneclerk@btinternet.com
Further information is on the village website: www.bishopstone-salisbury.co.uk	

THE VILLAGE HALL COMMITTEE MEMBERS

Chairman - Norman Barter	780471
Treasurer - Francis Taylor	780316
Secretary - Sue Grantham	07873 596310
Entertainments - Sue Taylor	780316
Event bookings - Caroline Ash	781044
Hall bookings - Margaret Barter	780471
Hall maintenance - Nigel Peasley	780713
Minute secretary - Virginia Middleton-Smith	780444
Member - Andy Stocker	780956
Member - Kathy Hales	07940 659644

The Village Hall is an important resource and offers a venue for a wide variety of events for the benefit of all. The Hall is supported by a large group of dedicated local people in addition to the Committee. We hope you will support events whenever you can and if you would like to join the wider group of Friends of the Village Hall then please contact any member of the committee.

FLOOD WARDENS	
West - Nigel Peasley	07761 463737
East - Michael Pratt	07798 607742
Emergency Planning - Piers Edwards	07920 475009

Letters to the Editor

Letters to STaB are very welcome, but the views expressed may not be those of the editorial team or the Parish Church Council.

CHALKE VALLEY FETE AND PRODUCE SHOW

DATE FOR YOUR DIARY AUGUST 17th 1 till 4 pm

There will be loads of activities including a fun dog show, birds of prey, music, games and lots of good things to eat!

We are looking for volunteers who could give us a couple of hours on the day to help in this fun event that raises money for local good causes.

We are also looking for people who would like a stall on the day, handmade crafts etc it's just £20 for your plot (early bird offer before May) or £25 after that. We had around 1000 people attending last year.

Please contact Treasurer.cvfete@gmail.com

Bishopstone Village Website

www.bishopstone-salisbury.co.uk

The village website carries a wealth of information about Bishopstone. There are pages devoted to the church, the Parish Council, what's on at the Village Hall, meetings, clubs, local organisations and village walks. There are even digital copies of this magazine.

If you want to have any information included on the website please contact either

Mike Ash (*bishopstoneclerk@btinternet.com*)

Or Roger Stockton (*rogerstockton@icloud.com*)

STaB Selling Spot

STaB Selling Spot posts are free of charge for those who live in the Parish. Let us know if you have anything to sell!

If there are any problems with the delivery of STaB please contact Sue Porter on *porter1totalserve@gmail.com* or 01722 780459.



Services in Chalke Valley Benefice – February 2024

BCP = Book of Common Prayer (Traditional Language), CW = Common Worship (Contemporary Language)



During Lent, a short service of Communion is held each Wednesday at 12noon:

21st February - St John the Baptist, Bishopstone

28th February - St Martin's, Fifield Bavant

6th March - St Mary's, Alvediston

4 February 2nd Sunday before Lent	9.30am Family Communion (CW) 9.30am Parish Communion (CW) 11.00am Family Communion (CW) 11.00am Family Communion (CW) 11.00am Family Service 11.00am Morning Prayer (BCP) 11.00am Morning Service	Broad Chalke Britford Ebbesbourne Wake Coombe Bissett Odstock Berwick St John Bishopstone	Kate Woolven Jenny Taylor Ruth H-S Jenny Taylor Adrian Taylor Lay Led Sally Leaver
11 February Sunday next before Lent	9.30am Parish Communion (CW) 9.30am Family Communion (CW) 11.00am Morning Prayer (BCP) 11.00am Parish Communion (CW) 11.00am All Age Service 3.00pm Evening Prayer (BCP)	Bowerchalke Nunton Charlton All Saints Coombe Bissett Alvediston Fifield Bavant	Kate Woolvern Ruth H-S Rhoderick Voremberg Jenny Taylor Biddy Trahair Biddy Trahair
14 February ASH WEDNESDAY	12 noon Communion with Ashing 6.00pm Communion with Ashing	Broad Chalke Coombe Bissett	Ruth H-S Jenny Taylor
18 February 1st Sunday of Lent	9.30am Holy Communion (BCP) 9.30am Parish Communion (CW) 9.30am Parish Communion (CW) 11.00am Morning Prayer (BCP) 11.00am Parish Communion (CW) 11.00am Holy Communion (BCP)	Bowerchalke Bishopstone Odstock Ebbesbourne Wake Homington Berwick St John	Ruth H-S Jenny Taylor Katharine Robinson Biddy Trahair Jenny Taylor Ruth H-S
25 February 2nd Sunday of Lent	9.30am Parish Communion (CW) 9.30am Parish Communion (CW) 9.30am Parish Communion (CW) 11.00am Family Service 11.00am Parish Communion (CW) 11.00am Holy Communion (BCP) 11.00am Morning Prayer (BCP)	Berwick St John Charlton All Saints Broad Chalke Nunton Bishopstone Alvediston Homington	Ruth H-S Jenny Taylor Kate Woolven Adrian Taylor Jenny Taylor Ruth H-S Rhoderick Voremberg
3 March 3rd Sunday of Lent	9.30am Family Communion (CW) 9.30am Parish Communion (CW) 11.00am Family Communion (CW) 11.00am Family Communion (CW) 11.00am Family Service 11.00am Morning Prayer (BCP)	Broad Chalke Britford Ebbesbourne Wake Coombe Bissett Odstock Berwick St John	Tony Monds Jenny Taylor Tony Monds Jenny Taylor Adrian Taylor Lay Led

Ministry Team:

Team Rector ~ The Revd Dr Ruth Howlett-Shipley: 01722 697022
Team Vicars ~ The Revd Canon Jenny Taylor: 01722 503081, Vacancy
Associate Priest ~ The Revd Kate Woolven: 07754 582395
Team Administrator ~ Mrs Emily Broomhead: 07890 262376

Assisting Clergy:

The Revd Canon Anthony Hawley: 01794 390607, The Revd Canon Tony Monds: 07808 614597

Lay Worship Leaders: Yvonne & Kevin Follett: 01747 828785, Caroline Lamb: 01722 780789, Sally Leaver: 01722 780447, Naomi Martin: 07713031774, Don Morgan: 01722 718557, Adrian Taylor: 01722 325862, Gill Riley: 01722 780538, Janet Roe: 01725 519242, Biddy Trahair: 01722 780666, Rhoderick Voremberg: 07785 304142, James Wardroper: 01722 718152